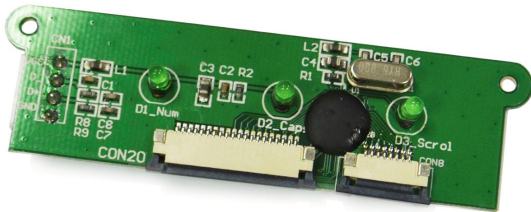



KBC-3000

Keyboard Controller, USB / PS/2 Interface

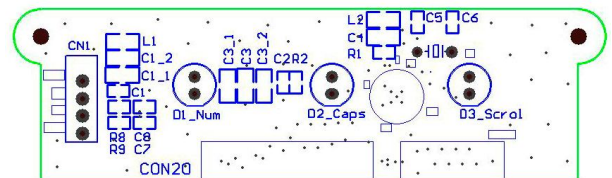


KBC-3000, is an 8-bit microprocessor chip on board Keyboard Controller with LED indicators specially designed for USB & PS/2 keyboard applications. It includes an 8-bit RISC CPU core, 192-Byte SRAM, low speed USB interface and 8K x 14 internal program Mask ROM. It is also built-in power management Suspend mode/ Normal mode.

FEATURES		
CPU	8-bit RICS CPU Core	
USB Specification	Compliant with low speed USB specification 1.1	Designed for KBM-3000 
Power	Provide 3.3V output (VCP), no external regulator required	
	Auto detect wake up events in suspend mode	
	Built-in power management Suspend mode/ Normal mode	
	Built-in LVAR (Low Voltage Auto Reset) circuit	
Key Matrix	20 Key matrix drive lines; 8 Key matrix sense lines	
Interface	Auto-configuration to operate as USB or PS/2	
LED Indicator	3 LEDs, NumLock, CapsLock and Scroll Lock	
Connectors	4-PIN Wafer, FPC 20-pin up connector, FPC 8-pin down connector	
Instruction Rate	3Mhz instruction rate with 6 Mhz crystal oscillation	
Operating Temperature	0 to 50 degrees Celsius (10% to 95% RH, 25 degree Celsius)	
Storage Temperature	-10 to 65 degrees Celsius (5% to 90% RH, 25 degree Celsius)	
Compatibility	Fully compatible with Windows 98SE, ME, XP, Vista, Windows 7, or later	
Dimension	85 (L) x 25 (W) mm	
Options	Support logic design for different key matrix requirement	

PIN Assignment (USB vs PS/2)

USB interface	PS/2 interface
VCC	VCC
D-	Data
D+	Clock
GND	GND



* Features and specification are subject to change without notice.

DIGIMORE
DIGIMORE YOUR LIFE

DIGIMORE ELECTRONICS CO., LTD
10 Fl., No. 61, Yan-Ping S. Rd., Taipei 100, Taiwan
TEL: +886 2 2311 3299 FAX: +886 2 2311 3375
Email: info@capacity-keyboard.com <http://www.capacity-keyboard.com>